

ETHEKWINI WATER AND SANITATION


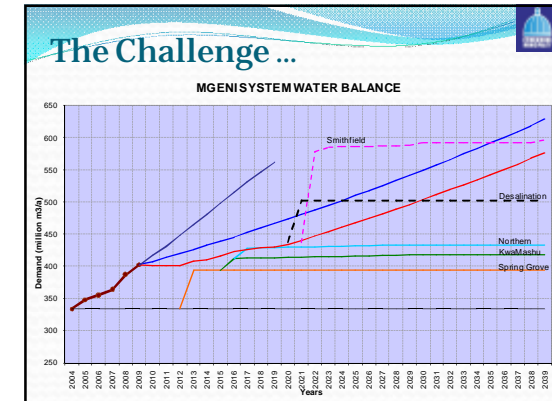
PRESENTATION TO THE SSC
THE DURBAN UPDATE
SEPTEMBER 2011



Municipalities must halve their water losses by 2014 –
President Jacob Zuma – State of the nation address
March 2009

Contents of Presentation


- eThekweni Trends and Update
- Asset Management
- IWA Performance Indicators
- Recommendations

The Response ...

Ø R150m will secure an additional 65MI / day of potable water

Ø Proposal submitted to prospective funders for up-scaled pressure reduction interventions


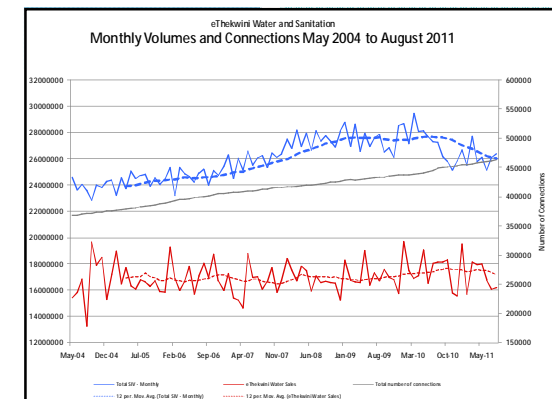


NRW Strategic Plan Objectives

- NRW by volume for 2008/2009 – 39.8% (ILI 8.8)
- NRW by volume for 2009/2010 – 37.5% (ILI 8.4)
- NRW by Volume for 2010/2011 – 32.3% (ILI 6.8)
- Target for June 2013 – 30% loss
- Target for June 2018 – 25% loss (ILI 4.5)
- 2% NRW reduction per annum is realistic.

Primary Interventions:-

- Reduce real losses
 - Reticulation Mains replacement
 - Active leak detection
 - Pressure management
 - Improving reservoir integrity
- Reduce apparent losses
 - Illegal connection rectification
 - Billing data integrity improvements
 - Improve meter accuracy



IWA Performance Indicators

- Fi46 – NRW by Volume (%)
- WR1 - Inefficiency of use 23.9%
- OP23 - Total Water Losses per Connection – 631 l/conn/d
- Op 27 - Real Losses Per Connection – 448 l/conn/d
- OP69 - Real Water Losses per km – 18.8 kl/km/d
- Op 29 - ILI – Infrastructure Leakage Index – 6.8

World Bank Physical Loss Assessment Matrix

Technical Performance Category	ILI	Liters/connection/day (when the system is pressurized) at an average pressure of:				
		10 m	20 m	30 m	40 m	50 m
Developed Country Situation	A	1 - 2	< 50	< 75	< 100	< 125
	B	2 - 4	50-100	75-150	100-200	125-250
	C	4 - 8	100-200	150-300	200-400	250-500
	D	> 8	> 200	> 300	> 400	> 500
Developing Country Situation	A	1 - 4	< 50	< 100	< 150	< 200
	B	4 - 8	50-100	100-200	150-300	200-400
	C	8 - 16	100-200	200-400	300-600	400-800
	D	> 16	> 200	> 400	> 600	> 800

Recommendations

- Funding is sourced and pressure management is rolled out throughout eThekweni, KZN and SA.
- Asset management is given top priority and funded accordingly
- Multiple indicators must be used to assess NRW, not just percentages. (Salga / WRC / Imesa Benchmarking Initiative – 25 October 2011)

Thank you.